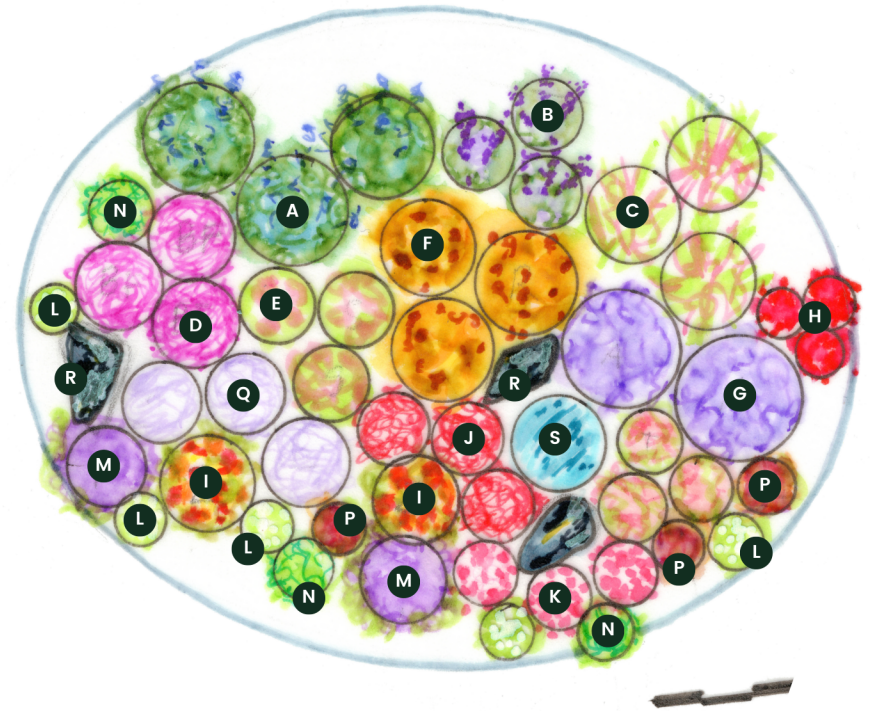


## GARDEN PLAN

# pollinator perennial garden

AT LEAST SIX HOURS  
OF DIRECT SUN DAILY

This garden plan is designed for an approximate area of 20' x 15' and can be easily customized. Use this plan as your inspiration and try repeating or removing certain components of the design to create the perfect customized garden plan fit for your unique landscape.



- A** 3 - Blue False Indigo (*Baptisia australis*)
- B** 3 - Meadow Blazing Star (*Liatris ligulistylis*)
- C** 3 - New England Aster (*Symphyotrichum novae-angliae*)
- D** 3 - Common Ironweed (*Vernonia fasciculata*)
- E** 3 - Showy Milkweed (*Asclepias speciosa*)
- F** 3 - Showy Goldenrod (*Solidago speciosa*)
- G** 2 - Anise Hyssop (*Agastache foeniculum*)
- H** 3 - Royal Catchfly (*Silene regia*)
- I** 2 - Butterfly Weed (*Asclepias tuberosa*)
- J** 3 - Foxglove Beardtongue (*Penstemon digitalis*)
- K** 3 - Purple Prairie Clover (*Dalea purpurea*)
- L** 5 - Selfheal (*Prunella vulgaris*)
- M** 2 - Narrow-Leaved Coneflower (*Echinacea angustifolia*)
- N** 4 - Eastern Pasqueflower (*Pulsatilla patens*)
- O** 3 - Rattlesnake Master (*Eryngium yuccifolium*)
- P** 3 - Purple Love Grass (*Eragrostis spectabilis*)
- Q** 3 - Mountain Mint (*Pycnanthemum virginianum*)
- R** Flat stones or shallow water saucers for pollinator hydration and sunning
- S** Birdbath

Minnesota native plants shown in green  
See reverse side for substitutions

## TIPS FOR SUCCESS IN PLANTING YOUR NEW GARDEN

Before planting, make sure that your plants are evenly moist, and plan to work in the garden in the morning or evening, outside of the hottest hours of the day. Gently press on the sides of the container to help pull the plant and root ball out. Loosen and straighten out any tangled or circling roots before planting to promote healthy new growth. Leave room for plants to grow and fully mature, referencing plant care tags to verify mature sizing and proper spacing before digging. Dig a hole twice as wide and just as deep as the root ball, making sure the top of the root ball is even with the ground when planted.

Place the plant in the hole and backfill with a mixture of two parts native soil, one part compost or planting mix, and an appropriate dosage of starter fertilizer such as Espoma Organic Biotone Fertilizer. Lightly tamp the soil and water in well. Keep all new plantings thoroughly watered through frost in their first season to establish strong, healthy root systems, especially new shrubs. Water using a garden hose or soaker hose—not a sprinkler—to ensure proper saturation and to prevent disease. Perennials will need time to establish, typically requiring at least three seasons of growth after planting to reach a mature size, so sit back and enjoy the show. Happy Planting!

# pollinator garden substitutions

If you would like to substitute a plant due to availability or personal preference, these options will also work well in the existing plan. For reference, plant height is listed next to each design component.

## A – **Blue False Indigo** (48-60")

Sweet Joe Pye Weed (*Eutrochium purpureum*)  
Big Bluestem (*Andropogon gerardii*)

## B – **Meadow Blazing Star** (48-60")

Gray-Headed Coneflower (*Ratibida pinnata*)  
Michigan Lily (*Lilium michiganense*)

## C – **New England Aster** (48-60")

False Sunflower (*Heliopsis helianthoides*)  
Swamp Milkweed (*Asclepias incarnata*)

## D – **Common Ironweed** (48-72")

Culver's Root (*Veronicastrum virginicum*)  
Yellow Prairie Grass (*Sorghastrum nutans*)

## E – **Showy Milkweed** (36-48")

Hoary Vervain (*Verbena stricta*)  
Purple Coneflower (*Echinacea purpurea*)

## F – **Showy Goldenrod** (48-60")

Wild Bergamot (*Monarda fistulosa*)  
Little Bluestem (*Schizachyrium scoparium*)

## G – **Anise Hyssop** (36-48")

White Turtlehead (*Chelone glabra*)  
Sideoats Grama (*Bouteloua curtipendula*)

## H – **Royal Catchfly** (36-48")

Prairie Blazing Star (*Liatris pycnostachya*)  
Stiff Goldenrod (*Solidago rigida*)

## I – **Butterfly Weed** (18-24")

Prairie Dropseed (*Sporobolus heterolepis*)  
Ohio Spiderwort (*Tradescantia ohiensis*)

## J – **Foxglove Beardtongue** (24-48")

Cream Gentian (*Gentiana alba*)  
Rough Blazing Star (*Liatris aspera*)

## K – **Purple Prairie Clover** (18-24")

Nodding Onion (*Allium cernuum*)  
Dotted Blazing Star (*Liatris punctata*)

## L – **Selfheal** (3-6")

Wild Strawberry (*Fragaria virginiana*)  
Eastern Prickly Pear (*Opuntia humifusa*)

## M – **Narrow-Leaved Coneflower** (18-24")

Wild Petunia (*Ruellia humilis*)  
Aromatic Aster (*Symphotrichum oblongifolium*)

## N – **Eastern Pasqueflower** (6-12")

Prairie Smoke (*Geum triflorum*)  
Field Pussytoes (*Antennaria neglecta*)

## O – **Rattlesnake Master** (48-60")

Prairie Coneflower (*Ratibida columnifera*)  
Golden Alexander (*Zizia aurea*)

## P – **Purple Love Grass** (12-24")

Cylindrical Blazing Star (*Liatris cylindracea*)  
Evening Primrose (*Oenothera macrocarpa*)

## Q – **Mountain Mint** (24-36")

White Prairie Clover (*Dalea candida*)  
Spotted Bee Balm (*Monarda punctata*)

Minnesota native plants shown in green