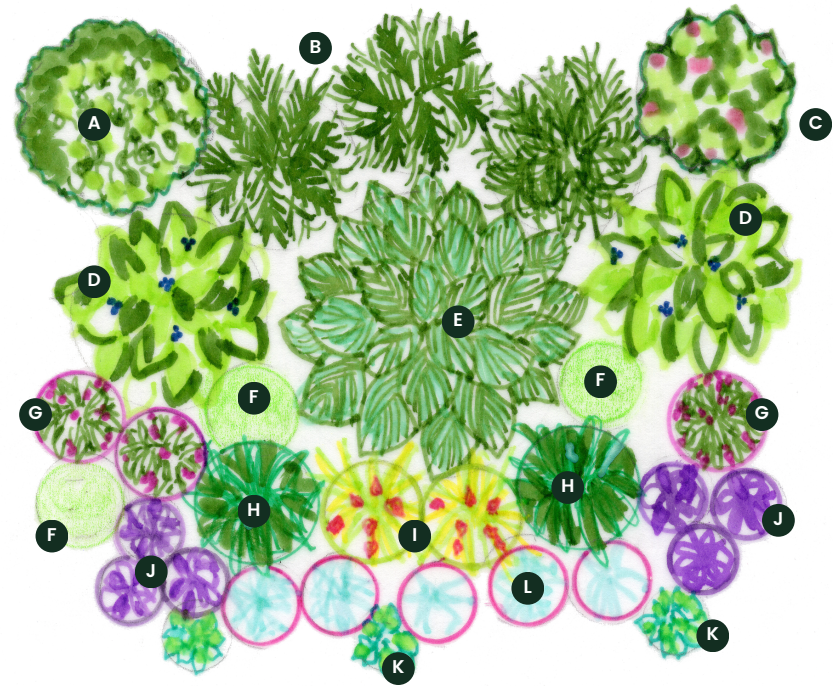


GARDEN PLAN

part sun perennial garden

4-6 HOURS OF DIRECT SUN DAILY

This garden plan is designed for an approximate area of 16' x 16' and can be easily customized. Use this plan as your inspiration and try repeating or removing certain components of the design to create the perfect customized garden plan fit for your unique landscape.



- A** 1 - 'Vanilla Spice®' Summersweet (*Clethra alnifolia* 'Vanilla Spice')
- B** 3 - 'Lady in Red' Lady Fern (*Athyrium filix-femina* 'Lady in Red')
- C** 1 - 'Little Joker®' Dwarf Ninebark (*Physocarpus opulifolius* hybrid)
- D** 2 - 'Gotemba' Golden Spikenard (*Aralia cordata* 'Gotemba')
- E** 1 - 'Blue Angel' Hosta (*Hosta* x 'Blue Angel')
- F** 3 - Variegated Solomon's Seal (*Polygonatum falcatum* 'Variegatum')
- G** 3 - 'Hot Lips' Turtlehead (*Chelone lyonii* 'Hot Lips')
- H** 2 - 'Vision in White' Astilbe (*Astilbe chinensis* 'Vision in White')
- I** 2 - 'Gold Heart' Bleeding Heart (*Dicentra spectabilis* 'Gold Heart')
- J** 6 - 'Black Forest Cake' Coral Bells (*Heuchera* 'Black Forest Cake')
- K** 3 - 'Rose Queen' Barrenwort (*Epimedium grandiflorum* 'Rose Queen')
- L** 5 - 'Raspberry Splash' Lungwort (*Pulmonaria* 'Raspberry Splash')

See reverse side for substitutions

TIPS FOR SUCCESS IN PLANTING YOUR NEW GARDEN

Before planting, make sure that your plants are evenly moist, and plan to work in the garden in the morning or evening, outside of the hottest hours of the day. Gently press on the sides of the container to help pull the plant and root ball out. Loosen and straighten out any tangled or circling roots before planting to promote healthy new growth. Leave room for plants to grow and fully mature, referencing plant care tags to verify mature sizing and proper spacing before digging. Dig a hole twice as wide and just as deep as the root ball, making sure the top of the root ball is even with the ground when planted.

Place the plant in the hole and backfill with a mixture of two parts native soil, one part compost or planting mix, and an appropriate dosage of starter fertilizer such as Espoma Organic Biotone Fertilizer. Lightly tamp the soil and water in well. Keep all new plantings thoroughly watered through frost in their first season to establish strong, healthy root systems, especially new shrubs. Water using a garden hose or soaker hose—not a sprinkler—to ensure proper saturation and to prevent disease. Perennials will need time to establish, typically requiring at least three seasons of growth after planting to reach a mature size, so sit back and enjoy the show. Happy Planting!

part sun perennial garden substitutions

If you would like to substitute a plant due to availability or personal preference, these options will also work well in the existing plan.

For reference, plant height is listed next to each design component.

A — 'Vanilla Spice®' Summersweet (48-72")

Glossy Black Chokeberry (*Aronia melanocarpa* var. *elata*)
'P.J.M.' Rhododendron (*Rhododendron* x 'P.J.M.')

B — 'Lady in Red' Lady Fern (24-36")

Northern Maidenhair Fern (*Adiantum pedatum*)
Northern Sea Oats (*Chasmanthium latifolium*)

C — 'Little Joker®' Dwarf Ninebark (36-48")

'Blue Shadow' Witch Alder (*Fothergilla major* 'Blue Shadow')
'Miniature Snowflake' Mockorange (*Philadelphus* x *virginalis* 'Dwarf Snowflake')

D — 'Gotemba' Golden Spikenard (48-60")

Goatsbeard (*Aruncus dioicus*)
'Chocoholic' Bugbane (*Actaea simplex* 'Chocoholic')

E — 'Blue Angel' Hosta (24-36")

New Jersey Tea Shrub (*Ceanothus americanus*)
'Storm Cloud' Bluestar (*Amsonia tabernaemontana* 'Storm Cloud')

F — Variegated Solomon's Seal (24-36")

Golden Alexander (*Zizia aurea*)
'Stairway to Heaven' Jacob's Ladder (*Polemonium reptans* 'Stairway to Heaven')

G — 'Hot Lips' Turtlehead (24-36")

'DAKOTA™ Burgundy' Beardtongue (*Penstemon digitalis* hybrid)
'Walker's Low' Catmint (*Nepeta* x *faassenii* 'Walker's Low')

H — 'Vision in White' Astilbe (18-24")

Bottle Gentian (*Gentiana andrewsii*)
'Roma' Masterwort (*Astrantia major* 'Roma')

I — 'Gold Heart' Bleeding Heart (24-36")

'Sweet Kate' Spiderwort (*Tradescantia* x *andersoniana* 'Sweet Kate')
White Bleeding Heart (*Dicentra spectabilis* 'Alba')

J — 'Black Forest Cake' Coral Bells (12-18")

'Pandora' Ragwort (*Ligularia dentata* 'Pandora')
'Twinkle Blue™' Balloon Flower (*Platycodon grandiflorus* 'Twinkle Blue')

K — 'Rose Queen' Barrenwort (8-12")

'Sugar & Spice' Foamflower (*Tiarella* x 'Sugar & Spice')
Dwarf Goatsbeard (*Aruncus aethusifolius*)

L — 'Raspberry Splash' Lungwort (12-18")

Woodland Phlox (*Phlox divaricata*)
'Pristar™ Deep Blue' Bellflower (*Campanula carpatica* 'Pristar Deep Blue')

Minnesota native plants shown in green