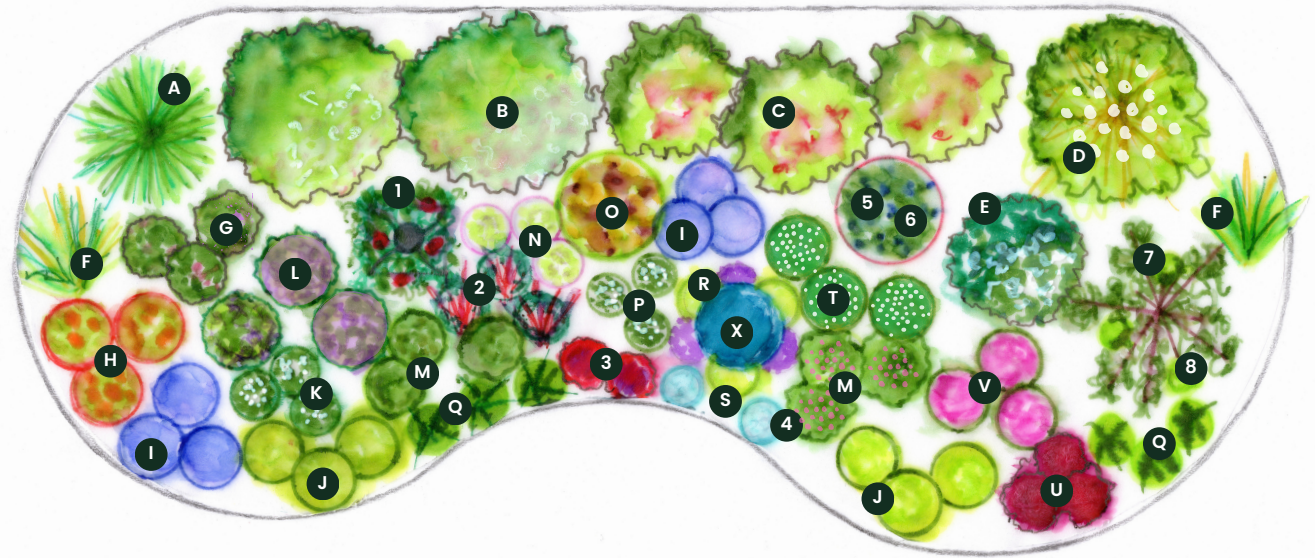


## GARDEN PLAN

# full sun perennial garden

AT LEAST SIX HOURS  
OF DIRECT SUN DAILY



This garden plan is designed for an approximate area of 30' x 12' and can be easily customized. Use this plan as your inspiration and try repeating or removing certain components of the design to create the perfect customized garden plan fit for your unique landscape.

### Herbaceous Perennials

- F** 2 - 'Karl Foerster' Feather Reed Grass (*Calamagrostis x acutiflora* 'Karl Foerster')
- G** 3 - 'Grape Crush' New England Aster (*Symphotrichum novae-angliae* 'Grape Crush')
- H** 3 - 'Sombbrero® Flamenco Orange' Coneflower (*Echinacea* hybrid)
- I** 6 - 'Blue Mirror' Larkspur (*Delphinium grandiflorum* 'Blue Mirror')
- J** 6 - 'Angelina' Stonecrop (*Sedum rupestre* 'Angelina')
- K** 3 - Mountain Mint (*Pycnanthemum virginianum*)
- L** 3 - 'Caradonna' Meadow Sage (*Salvia nemorosa* 'Caradonna')
- M** 6 - 'Millennium' Ornamental Onion (*Allium* hybrid)
- N** 3 - 'Floristan Violet' Blazing Star (*Liatris spicata* 'Floristan Violet')
- O** 1 - 'American Gold Rush' Black-Eyed Susan (*Rudbeckia x fulgida* 'American Gold Rush')
- P** 3 - 'Kismet® White' Coneflower (*Echinacea* hybrid)
- Q** 6 - 'Endlessly® Coral' Daylily (*Hemerocallis fulva* hybrid)
- R** 3 - 'Flame Pro® Violet Charm' Garden Phlox (*Phlox paniculata* 'Pro Violet Charm')
- S** 3 - 'Northern Lights' Tufted Hairgrass (*Deschampsia cespitosa* 'Northern Lights')
- T** 3 - 'New Vintage White' Yarrow (*Achillea millefolium* 'New Vintage White')
- U** 3 - 'Grand Marshall™' Bee Balm (*Monarda didyma* hybrid)
- V** 3 - 'Magnus' Purple Coneflower (*Echinacea purpurea* 'Magnus')

Minnesota native plants shown in green / \* Denotes annual plant  
See reverse side for herbaceous perennial substitutions

### Woody Shrubs

- A** 1 - 'Holmstrup' Arborvitae (*Thuja occidentalis* 'Holmstrup')
- B** 2 - 'Little Lime®' Panicle Hydrangea (*Hydrangea paniculata* 'Jane')
- C** 3 - 'Crimson Kisses®' Weigela (*Weigela* hybrid)
- D** 1 - 'Crème de Mint™' Dogwood (*Cornus alba* 'Crimzam')
- E** 1 - 'Pink Beauty' Cinquefoil (*Potentilla fruticosa* 'Pink Beauty')

### Edibles

- 1** 1 - \*Indeterminate Tomato (*Solanum lycopersicon*) with \*Verbena (*Verbena x hybrida*)
- 2** 3 - \*'Bright Lights' Swiss Chard (*Beta vulgaris* 'Bright Lights')
- 3** 2 - \*Red Lettuce (*Lactuca sativa*)
- 4** 2 - 'Staro' Curly Chives (*Allium schoenoprasum* 'Staro')
- 5** 1 - 'Northblue' Blueberry (*Vaccinium corymbosum* 'Northblue')
- 6** 1 - 'Northcountry' Blueberry (*Vaccinium corymbosum* 'Northcountry')
- 7** 1 - \*Climbing Beans (*Phaseolus vulgaris*) with \*Nasturtium (*Tropaeolum*)
- 8** 3 - \*Green Lettuce (*Lactuca sativa*)

### Garden Features

- X** Birdbath
- [1]** Obelisk support for indeterminate tomato
- [7]** Tripod support for climbing beans

## full sun perennial garden substitutions

If you would like to substitute a plant due to availability or personal preference, these options will also work well in the existing plan. For reference, plant height is listed next to each design component.

### F — 'Karl Foerster' Feather Reed Grass (48-60")

Little Bluestem (*Schizachyrium scoparium*)

Yellow Prairie Grass (*Sorghastrum nutans*)

### G — 'Grape Crush' New England Aster (24-36")

Showy Milkweed (*Asclepias speciosa*)

Sea Holly (*Eryngium planum*)

### H — 'Sombbrero® Flamenco Orange' Coneflower (18-24")

Butterfly Weed (*Asclepias tuberosa*)

'Barbican™ Red' Blanket Flower (*Gaillardia aristata* 'Barbican Red')

### I — 'Blue Mirror' Delphinium (18-24")

'Rozanne' Cranesbill (*Geranium* x 'Rozanne')

'Delilah™ Purple' Dianthus (*Dianthus plumaris* 'Delilah Purple')

### J — 'Angelina' Stonecrop (3-6")

Field Pussytoes (*Antennaria neglecta*)

Wild Strawberry (*Fragaria virginiana*)

### K — Mountain Mint (24-36")

'Lily Looks™ Tiny Crystal' Asiatic Lily (*Lilium* 'Tiny Crystal')

'Walker's Low' Catmint (*Nepeta* x *faassenii* 'Walker's Low')

### L — 'Caradonna' Meadow Sage (18-24")

Anise Hyssop (*Agastache foeniculum*)

'Vernique® Rose' Speedwell (*Veronica longifolia* 'Vernique Rose')

### M — 'Millenium' Ornamental Onion (18-24")

Prairie Coneflower (*Ratibida columnifera*)

'Hummelo' Betony (*Stachys officinalis* 'Hummelo')

### N — 'Floristan Violet' Blazing Star (36-48")

Prairie Blazing Star (*Liatris pycnostachya*)

Foxglove Beardtongue (*Penstemon digitalis*)

### O — 'American Gold Rush' Black-Eyed Susan (24-36")

Sideoats Grama (*Bouteloua curtipendula*)

'Blue Jean Baby' Russian Sage (*Perovskia atriplicifolia* 'Blue Jean Baby')

### P — 'Kismet® White' Coneflower (18-24")

Narrow-Leaved Coneflower (*Echinacea angustifolia*)

'Autumn Charm™' Sedum (*Sedum telephium* hybrid)

### Q — 'Endlessly® Coral' Daylily (18-24")

Lambs' Ears (*Stachys byzantina*)

'Thriller' Lady's Mantle (*Alchemilla mollis* 'Thriller')

### R — 'Flame Pro® Violet Charm' Garden Phlox (12-18")

'Rose Marvel' Meadow Sage (*Salvia nemerosa* 'Rose Marvel')

'Grand Mum™' Bee Balm (*Monarda didyma* hybrid)

### S — 'Northern Lights' Tufted Hairgrass (12-18")

Prairie Smoke (*Geum triflorum*)

'Elijah Blue' Fescue (*Festuca glauca* 'Elijah Blue')

### T — 'New Vintage White' Yarrow (18-24")

Mountain Mint (*Pycnanthemum virginianum*)

'September Charm' Japanese Anemone (*Anemone* x *hybrida* 'September Charm')

### U — 'Grand Marshall™' Bee Balm (12-18")

'Crimson Fans' Mukdenia (*Mukdenia rossii* 'Crimson Fans')

'Silver Mound' Wormwood (*Artemisia schmidtiana* 'Silver Mound')

### V — 'Magnus' Purple Coneflower (24-36")

Purple Prairie Clover (*Dalea purpurea*)

'Roselily™ Samantha' Double Lily (*Lilium orientalis* hybrid)

## TIPS FOR SUCCESS IN PLANTING YOUR NEW GARDEN

Before planting, make sure that your plants are evenly moist, and plan to work in the garden in the morning or evening, outside of the hottest hours of the day. Gently press on the sides of the container to help pull the plant and root ball out. Loosen and straighten out any tangled or circling roots before planting to promote healthy new growth. Leave room for plants to grow and fully mature, referencing plant care tags to verify mature sizing and proper spacing before digging. Dig a hole twice as wide and just as deep as the root ball, making sure the top of the root ball is even with the ground when planted.

Place the plant in the hole and backfill with a mixture of two parts native soil, one part compost or planting mix, and an appropriate dosage of starter fertilizer such as Espoma Organic Biotone Fertilizer. Lightly tamp the soil and water in well. Keep all new plantings thoroughly watered through frost in their first season to establish strong, healthy root systems, especially new shrubs. Water using a garden hose or soaker hose—not a sprinkler—to ensure proper saturation and to prevent disease. Perennials will need time to establish, typically requiring at least three seasons of growth after planting to reach a mature size, so sit back and enjoy the show. Happy Planting!