

# APRIL

national gardening month

S

M

T

W

T

F

S

29

30

31

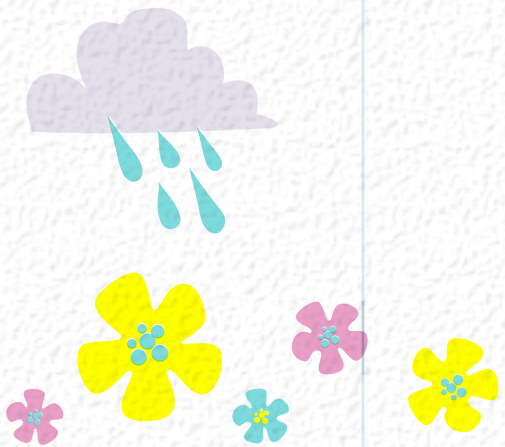
APRIL FOOLS

1

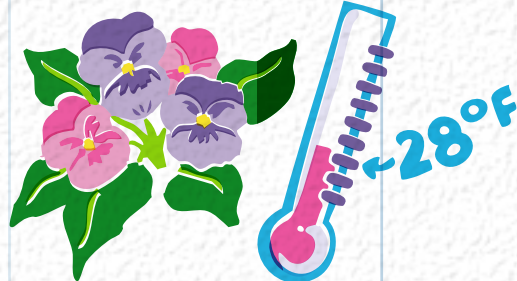
2

3

4



## SPRING INTO THE GARDEN:



Pansies and violas tolerate temps down to 28 degrees.



Plant pansies, violas, and cool weather annuals in containers.

5

6

7

8

9

10

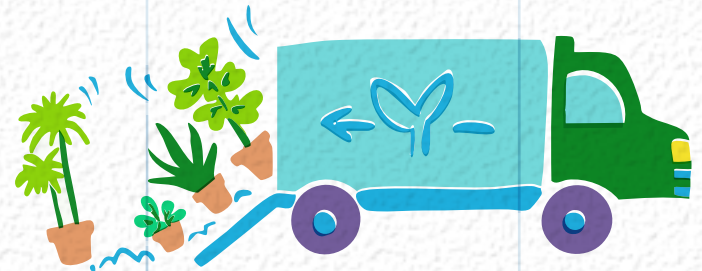
11

## SEEDS & SHOWERS:



Start broccoli, cabbage, and cauliflower.

## NEW IN THE GREENHOUSE:



Indoor plants are fully stocked. New arrivals weekly!

12

13

INTERNATIONAL PLANT APPRECIATION DAY

Start cucumbers, zucchini, and squash indoors.



## GROWING GREENER:



Plan to plant early spring bloomers for the pollinators.

(Visit <https://tonkadale.com/earllyspringcolor> for a few ideas to choose from.)

17

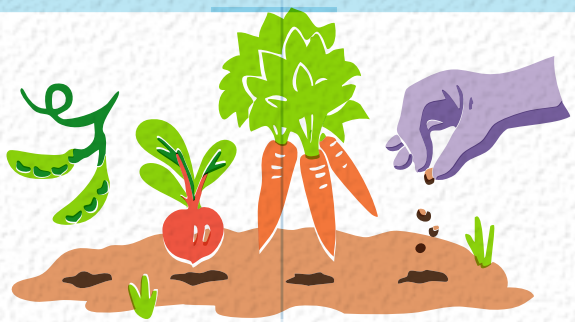
18

Tropical plants – mandevilla, jasmine, hibiscus, and alocasia arrive.



19

20



Direct sow carrots, beets, radishes, and peas in the garden.

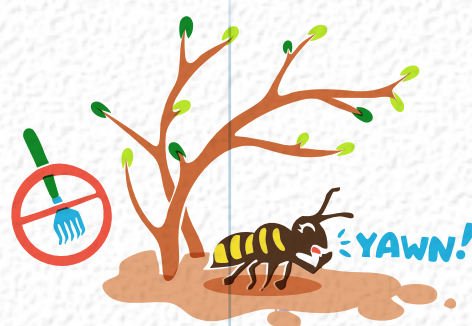
21

EARTH DAY

22

23

Wait to clean up the garden until day-time temps reach 50 degrees.



Pollinators are still waking up!

ARBOR DAY

24

25



Perennials start rolling in!

26

27

28

29

30



Plant potatoes and onions when the soil is tillable, and the ground has warmed.

1

2



tonkadale  
YOUR GREENHOUSE HOME