

OCTOBER

From Fall to Festive

S M T W T F S

28 29 30 1 2 3 4



CLOSING UP THE GARDEN:



Compost spent annuals and cut back perennials that don't provide winter interest or food for wildlife.

PREPARE FOR CELEBRATIONS:

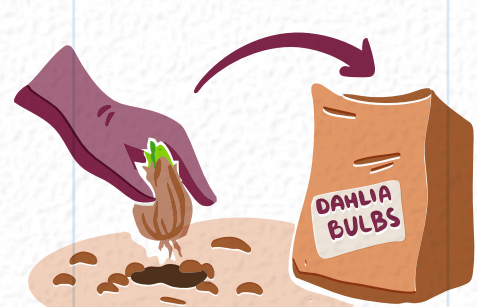
5 6 7 8 9 INDIGENOUS PEOPLES' DAY 10 11



Mulch perennials, shrubs, and young trees to protect roots from freeze-thaw cycles. (6" of weed free hay, straw, or leaves)



Clean and store garden tools, hoses, and pots before they crack or rust.



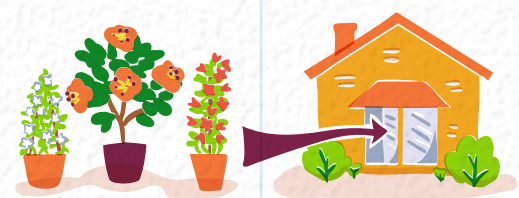
Lift and store tender bulbs, such as dahlias & cannas, before hard frost.



Use ornamental cabbages, kale, mums, gourds, and straw bales for cool-weather porch décor.

12 13 14 15 16 17 18

SHIFT TO INDOORS:



Transition foliage and all tropical plants (jasmine, mandevilla, hibiscus) indoors before frost.

SUPPORT WILDLIFE:

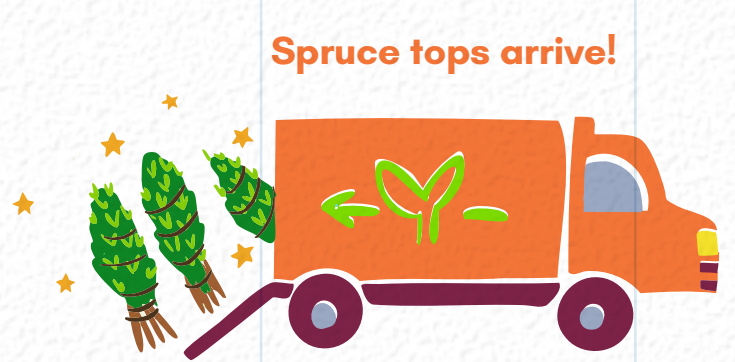


Leave seed heads on sunflowers, coneflowers, and ornamental grasses for the birds.



Set up or refill suet and bird feeders to support migrating and overwintering birds.

19 20 21 22 23 24 25



Spruce tops arrive!



Add a heated bird bath before freezing temps settle in.



Carve pumpkins for halloween fun!

26 27 28 29 30 31 HALLOWEEN 1



Adjust watering and light for houseplants as daylight shortens.

Start forcing amaryllis and paperwhites for holiday blooms.



Gather greens and supplies (tonka terra, wilt-stop) for spruce top pots and begin assembling.

